

RACK-SYSTEM 180

PCB handling RS180

The Rack-System 180 is the simplest and most reliable way to handle printed circuit boards with ESD protection. Just like using a construction kit, you can assemble your rack system using the different possible combinations. With integrated adjusting slot for the simplest and most efficient adjustment of size. Combined with our Blackline containers, you achieve perfect protection, even during transport.



Slot dimensions

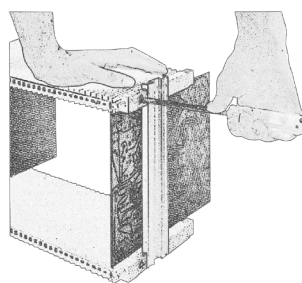
Division	=	10.16 mm
Width	=	3.50 mm
Depth	=	2.50 mm

Quick and simple adjustment

The adjusting slot is marked with a rhombus and can be found at each end of the slot wall. It is 0.25 mm shallower than all other slots. Simply clamp the printed circuit board in the slot wall, screw the slot wall and aluminium profile, and you have already set the insertion dimension perfectly.



Figure showing slot lock



Applications

The Rack-System 180 is extremely well-suited for the storage and transport of electrostatic printed circuit boards.

Tip

You will find suitable stackable containers in the Blackline section.

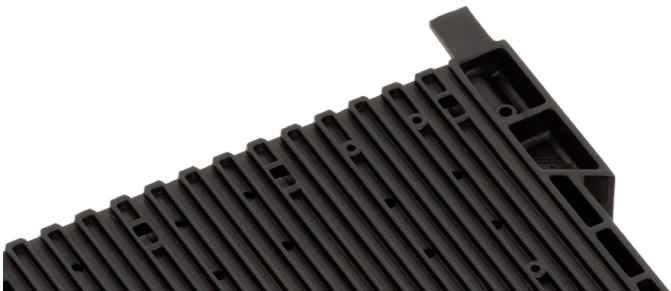
Special types

All non-stock items are marked thus and available on request only.

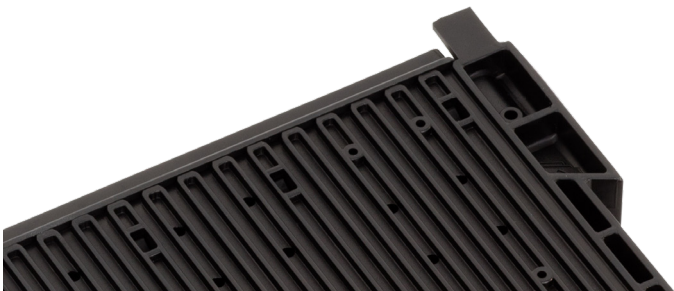


Slot Wall variants

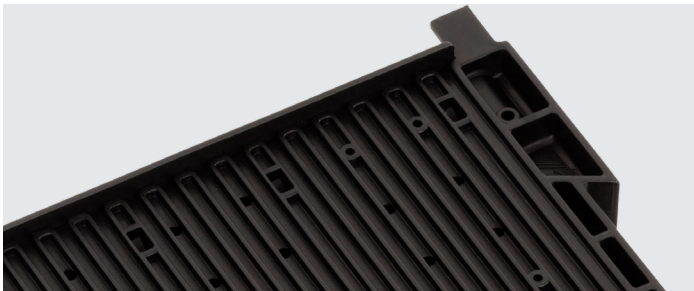
The different slot walls differ from each other with differing base stops and strengthening:



Without base stop (000/900)



With base stop (022/922)



With base stop (032/932)



With base stop (025/925)



Non-strengthened (long side)



Non-strengthened (short side)



Strengthened (long side)



Strengthened (short side)

Rack-System 180 mounted (with brace)

