

AUTOMATIC BOX

Designed to be either closed (Logiline Futura) or perforated (SGL 2000), the extremely dimensionally stable stackable containers of the Automatic Box range are ideal for the automated or manual distribution of food and non-food products. However, the trays and tablets also perform well in semi and fully automated operation in goods distribution centres or as part of the production logistics. The construction takes into account both the requirements of modern logistics and the opportunities that today's plastics technology has to offer.



Available sizes

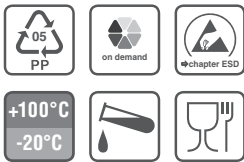
Logiline Futura (closed)		SGL 2000 (perforated)	
Basic dimensions (LxW; mm)	External height (mm)	Basic dimensions (LxW; mm)	External height (mm)
400x300	120 175	400x300	146
600x400	120 175/176	600x400	100 146 279

Trays and tablets

Basic dimensions (LxW; mm)	External height (mm)	
328x248	50	80
500x330	98	140
600x400	60	
645x485	30	

Special types

All non-stock items are marked thus and available on request only.



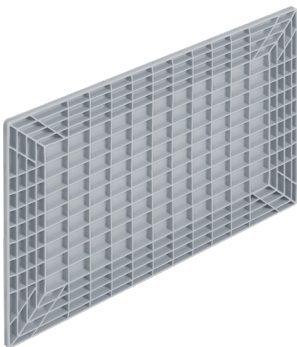
Base types



Closed flat base 007



Slitted SGL base 530
(reverse stackable)



Perimeter ribbed base 064
(strengthened 13 mm, low-noise)

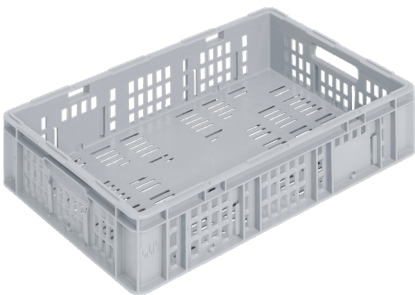


Round-hole-perforated STR
base (STR = stacking rib)

Side wall types

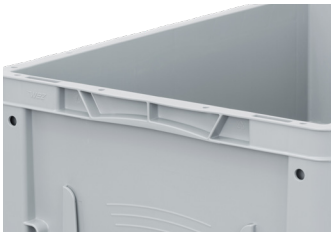


Closed wall

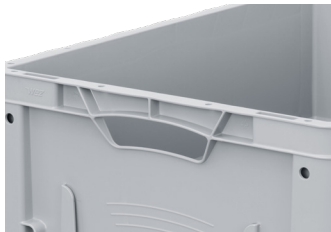


Slitted wall

Grip types



Shell grip



2 open grips



2 open grips

Standard colours (Slight colour differences possible)



Grey RAL 7001
(Standard)