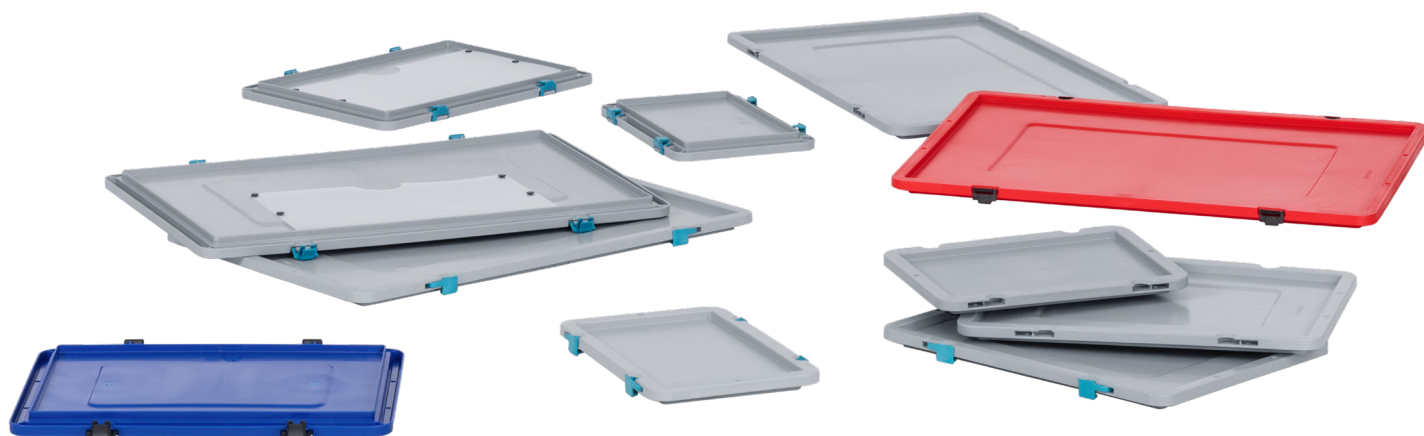


LOGILINE

SGL-standard lid LL

The dimensionally stable lid of the Logiline range is available in four versions: loose for placing on the container, with hinges and closures and with four swing latches. It is adapted to the SGL-standard, easy to handle and the wearing parts can be replaced at any time.



Applications

The Logiline lid combined with a Logiline container provides optimal protection of the contents of the container against external influences.

Available sizes

Basic dimensions (L×W in mm)

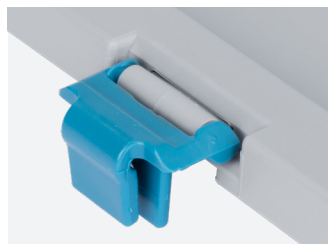
200×150 (transparent)

300×200

400×300

600×400

Hinge for lid



Suitable for Logiline stackable containers.

Special types

All non-stock items are marked thus and available on request only.

