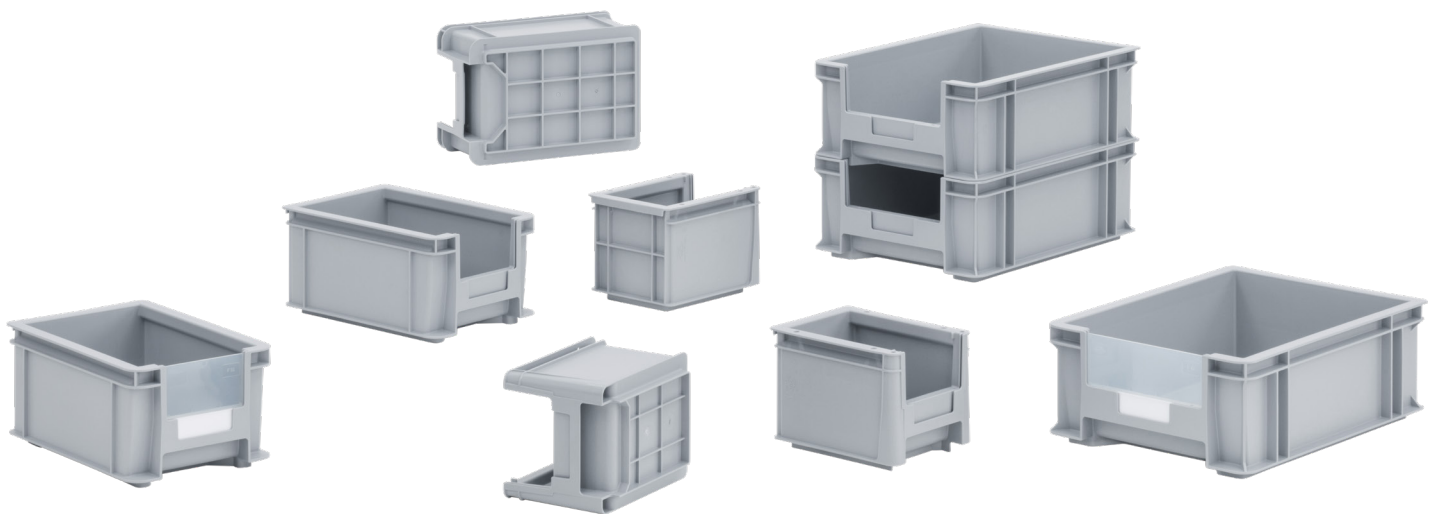


# LOGILINE

## SGL-standard container LL Vista with access opening

The Logiline Vista range is extremely stable dimensionally and ideally suited for the most demanding applications in industrial plants. The heavy-duty Logiline Vista containers do not need storage surfaces or shelves at all. With their well-thought-out snap-in system in the rear wall, they can be combined as required with a simple hand movement and the organisation and storage of the parts is always visible.



### Applications

The Logiline Vista container with an access opening offers a practical solution for the storage of tools and small parts at set-up locations and for work preparation.

### Accessories

Labels and screens round of the product range.

### Special types

All non-stock items are marked thus and available on request only.

