

NEWBOX

Euro-standard stackable containers of the Newbox range are available in about 20 different sizes and with a very large variety of grips, bases and walls can be used universally in the storage facility and as transport containers. The containers are stackable and dimensionally matched with Euro pallets. Compared with the Logiline range, the Newbox range impresses with a somewhat slimmer and lighter design that is nevertheless robust and dimensionally stable.



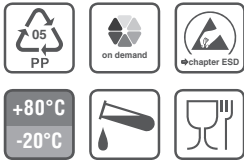
Available sizes

Basic dimensions (LxW in mm)	External height (mm)								
300×200	120	147	220						
400×300	120	170	220	270	320				
600×400	75	120	150	170	220	236	280	320	423
800×600	320								

(depending on the base design, external height +/- 5 mm)

Special types

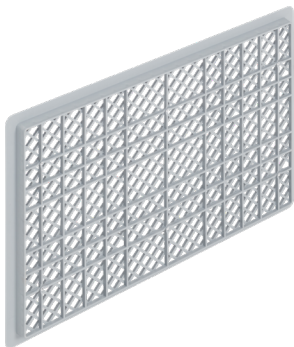
All non-stock items are marked thus and available on request only.



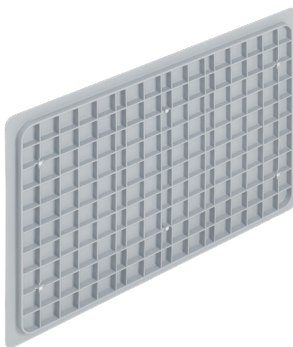
Base types



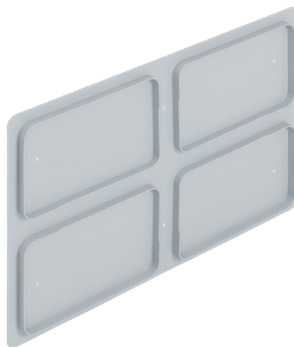
Closed flat base V1



Perforated flat base V3



Ribbed base V4
(strengthened, 12 mm)



Integrated system base V6
(modularly stackable)

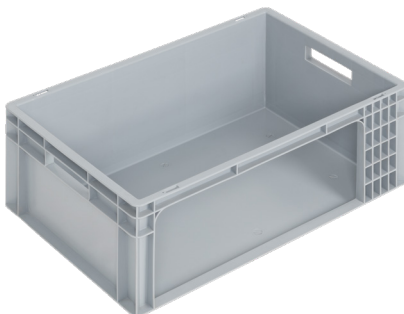
Side wall types



Closed wall (V1)

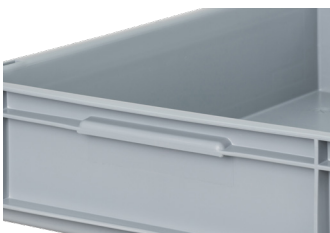


Perforated wall (V2)

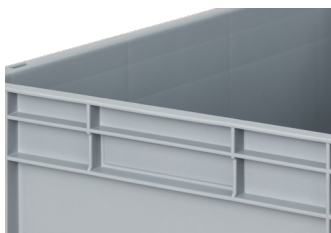


Wall with access opening (V5, V7)

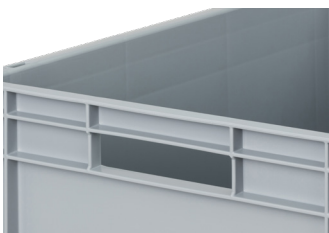
Grip types



Shell grip



Handle strip

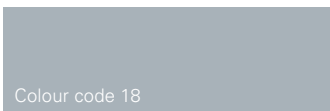


2 open grips



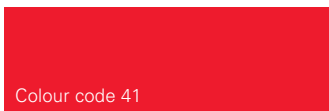
4 open grips

Standard colours (Slight colour differences possible)



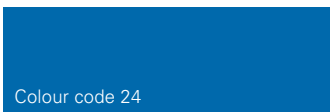
Colour code 18

Grey RAL 7001
(Standard)



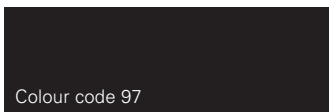
Colour code 41

Red RAL 3020
(Limited range)



Colour code 24

Blue RAL 5015
(Limited range)



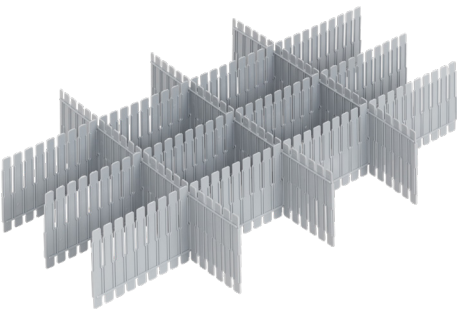
Colour code 97

Black ESD
(see section ESD)

Newbox accessories

The Newbox range includes not only plastic containers but also the appropriate lids and cases. Dividers, labelling and marking, insert boxes and rollboys for easier transport complement the range.

Dividers



Lid



Labelling



See section:
Labelling

Rollboy



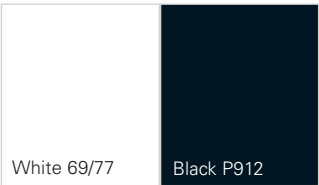
See section:
Store Organisation

Tip

You will find foam cut-outs in the Logiline section.

Marking (Printing)

On request, hot embossing in the following colours can also be used to customise the design of the containers of the Newbox range:



Other colours on request.

